

The 45th Symposium

Hosted by Plant Biotechnology
Association in Kyoto and
Center for Ecological
Evolutionary Developmental
Biology, Kyoto Sangyo
University

November 25 (Fri) 2016

13:30~17:00

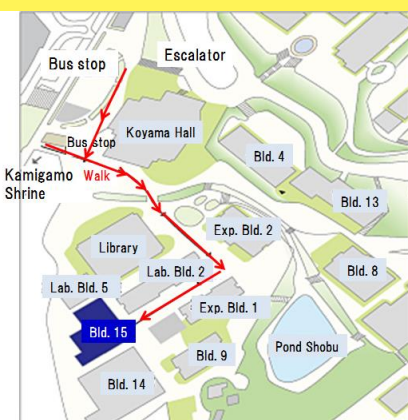
Kyoto Sangyo University
Bld. 15, 1st floor
Room 15102

Kyoto Sangyo University
Kamigamomotoyama, Kita-
ku, Kyoto 603-8555, Japan

[http://www.kyoto-
su.ac.jp/english/school/location.html](http://www.kyoto-su.ac.jp/english/school/location.html)

Access

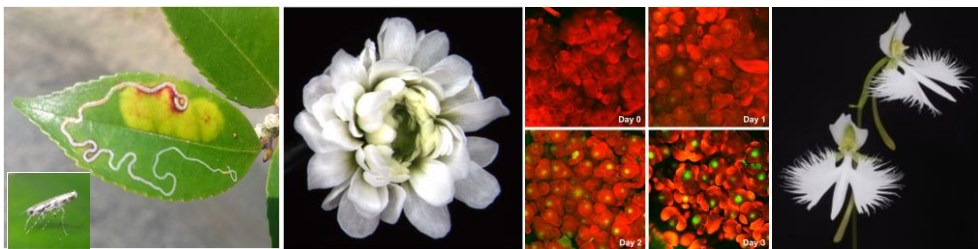
- (1)Subway Kokusai-kaikan st. → Kyoto Bus (line 40), Kyoto Sangyo University bus stop
- (2)Subway Kitaoji st. → City bus (line north 3) or Kyoto bus, Kyoto Sangyo University bus stop
- (3)Keihan line Demachiyanagi st. → Eizan line Nikenchaya st. → Shuttle bus to University
- (4)Kyoto Bus (Hirogawara 32, Shizuhara-Shiroyama 34, Kyoto Sangyo University Express 36) to University bus stop
- (5)School Bus from Kyoto Prefectural University at 12:00



Map of Kyoto Sangyo University

International Plant Meeting in Kyoto 2016

~Plant Development and Environment~



13:00 Desk Open

13:25 Opening Remarks (**Toru Terachi**, Kyoto Sangyo University)

Session I (Chair: Seisuke Kimura, Koto Sangyo University)

13:30 **Alessandra Devoto** (Royal Holloway University of London)

How distress signals affect growth in plants: biotechnology for health and fuel production

14:10 **Antoine Guiguet** (University of Tours François-Rabelais, France & KPU)

Molecular basis and evolution of the *Galligenous* lifestyle in the genus *Caloptilia*

14:30 **Akihisa Hamatani** (Kyoto Prefectural University)

Investigation of life history of the gall-forming leaf-miner *Borboryctis euryae* (Insecta: Lepidoptera: Gracillariidae): towards an understanding of the genetic background of gall formation

14:45-15:05 Coffee Break

Session II (Chair: Seiji Takeda, Kyoto Prefectural University)

15:05 **Toshiro Ito** (NAIST, TLL (NUS))

Bio-timer controlling terminal differentiation of floral stem cells

15:45 **Kei_ichiro Ohashi** (Kyoto Prefectural University)

Flower hairs regulate petal shape in morning glory

16:00 **Tsutomu Tachibana** (Kyoto Prefectural University)

Flying orchid, *Habenaria radiata*: Microsatellite-based phylogenetic and morphological analysis

16:15 **Yusuke Onishi** (Kyoto Prefectural University)

Characterization of *Mentha* glandular trichomes in strains that accumulate different type of monoterpene

16:30 **Rumi Amano** (Kyoto Sangyo University)

Vegetative propagation in *Rorippa aquatica*: Understanding plant regeneration using non-model species

16:45 Closing Remarks (**Takashi Shiina**, Kyoto Prefectural University)

17:00 Mixer (Lounge Furusato at Kyoto Sangyo University)

【Registration】

Symposium is open for all and free to attend. Come to the desk directly.

【Mixer registration】

JPN 3,500 (1,500 for students)

Email to: Dr. Seisuke Kimura (seisuke@cc.kyoto-su.ac.jp) Kyoto Sangyo University

Kamigamomotoyama, Kita-ku, Kyoto 603-8555, Japan 603-8555, Tel:+81-75-705-1896, FAX: +81-75-705-1914

Plant Biotechnology Association in Kyoto, <http://www2.kpu.ac.jp/assoc/kpba>

Center for Ecological Evolutionary Developmental Biology, Kyoto Sangyo University

This symposium is supported by MEXT-Supported Program for the Strategic Research Foundation at Private University.